

GTF PLUS COMPLETE SOLUTIONS FOR INDUSTRIAL ELECTRIC HEATERS CONTROL

GEFRAN

Maximum usage flexibility

Longer load life

Exclusive reduced downtimes



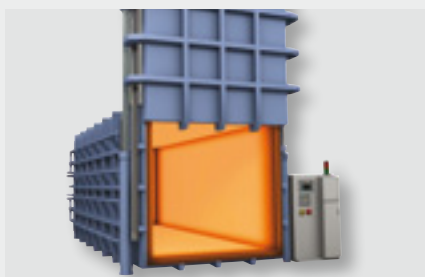
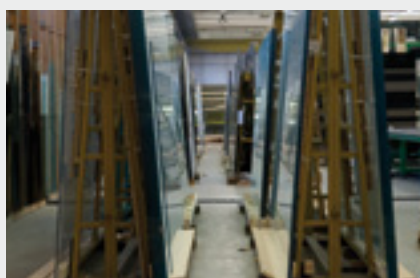
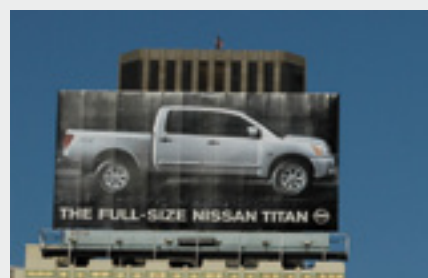
CONFIGURABLE CONTROLLERS FOR ELECTRICAL POWER

GTF plus is the new line of **GEFRAN power controllers**, designed to control all types of industrial electric heaters. **Process accuracy and reliability via voltage, current, power feedback.**

Versatility, plus easy and guided configuration with GEFran user friendly software, make the device ideal for all power control applications.

> TECHNICAL DATA

- Ideal for resistive loads, Super Kanthal ®, resistors, silicon carbide, long/medium/short-wave IR lamps, mono/tri-phase transformers
- Control: digital, analogue, potentiometer, RS485, Modbus RTU
- Trigger: "Zero crossing", "Burst Firing" "Half Single Cycle", "Phase angle"
- Rated currents from 25 A to 250 A; rated voltages 480VAC, 600VAC and 690Vac
- Soft-Start, Current Limit, Feedback of I, I², V, V², P
- **Accurate diagnostics: partial/total load interrupt, short circuit**
- **Integrated resettable electronic fuse total protection**
- **RS485 communication in Modbus RTU**
- UL, TÜV certification

Modbus RTU**> APPLICATIONS****> Plastics: bottle blowing machines****> High-temperature furnaces for metals/thermal treatments****> Ceramics furnaces****> Glass furnaces and machines****> Wood edging machines****> Industrial printers with water-based inks****GEFRAN Spa**

via Sebina, 74 - 25050 Provaglio d'Iseo (BS) Italy
Ph. +39 03098881 - Fax +39 0309839063 - www.gefran.com - info@gefran.com

GEFRAN