

INKJET, INC. DURACODE SERIES CONTINUOUS INKJET (CIJ)

CONTINUOUS CODE. CONTINUOUS UPTIME.

InkJet, Inc.'s CIJ printer, the DuraCode Series, is designed to deliver the best quality code, day in and day out, continuously. Our feature-packed CIJ printer, available in a touch screen or keyboard model, offers cost saving with a single part service and solvent consumption saving system. Add in InkJet, Inc.'s fluids, parts & service and downtime will be the least of your worries!



RELIABLE OPERATION

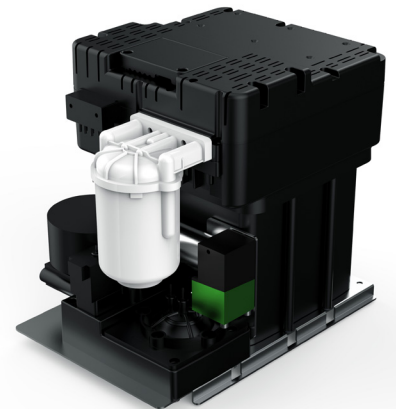
In the harshest manufacturing environments, you require a printer/coder that will hold its own and do the job you need. The DuraCode Series has a robust stainless steel design that can stand-up to extreme temperatures, humidity, vibrations and more. It also has a simple, high resolution operator interface.

QUALITY PRINTING

The automatic monitoring system allows for quality print consistently. In addition to the quality of the code that the printer provides, InkJet, Inc. offers the fluids that are backed by a quality control process that is unmatched in the industry.

POWERFUL & FLEXIBLE

The DuraCode Series of CIJ printers offers print data options through network and local scanners and gives a powerful performance with a low cost of ownership. It has a modular, well protected IP55 industrial structure and the ability to quickly change the filter and fluids keeps your manufacturing line up and running.



INKJET, INC. CIJ

DURACODE SERIES

THE DETAILS

INKJET, INC. CIJ SPECIFICATIONS

Nozzle	70/60/50/40 µm		
Maximum Vertical Drops	34		
Font Library	●		
Multi-Language	●		
Traverse Printing	●		
90 Degree Vertical Printing	●		
IP55 Industrial Protection	●		
Special Counter	●		
Counter Replacement	●		
Clock Replacement	●		
Encoder Port	●		
USB Port	●		
Serial Port	○		
Network LAN Connection	○		
Ink Recovery Pump	●		
Positive Air Pump	○		
Solvent Flush Pump	●		
Micro Print	● (40 um)		
Umbilical	Length: 9 ft. / 2.7 m		
Print Height	1.2-15 mm		
Max Printing Speed	Up to 1050 ft/min / 320 m/min		
Printing Distance	1 - 3 inches / 25.4 - 76.2 mm		
Input System	Touch Screen or Standard Keyboard / WYSIWYG		
Print Font	5x5, 7x5, 9x6, 11x8, 16x11, 24x17, 32x22		
Operating Range	41-113° F / 5-45° C		
User Defined Field	Bar Code, QR Code, Logos, Clock, Counter, Classes, etc.		
Power	120-240 VDC, 50-60 HZ		
Electrical Consumption	120-150 W		
Net Weight	27 kg / 60 lbs		
Gross Weight with Complete Package	45 kg / 99 lbs		
<table border="1"> <tr> <td>● = standard</td> </tr> <tr> <td>○ = optional</td> </tr> </table>		● = standard	○ = optional
● = standard			
○ = optional			